



TRAINING CATALOGUE 2024

Increase the attractiveness of businesses
through continuing training
to animal nutrition professions





For more than **40 years**,
Tecaliman has been
supporting the industry's
industrialists and thus
demonstrating
the know-how of our

More informations
Order a service
Request advice



www.tecaliman.com

● AN OFFER TO THE NEAREST OF YOUR NEEDS



As technological interface for the animal nutrition sector, Tecaliman is constantly striving to be as **close as possible to the practical needs of manufacturers**. As a result, training provision is constantly evolving, adapting and improving. These requirements translate into:

- Obtaining the **Qualiopi** certification in 2021, a guarantee of the quality of the training activities carried out by Tecaliman.
- The **evaluation of the quality** of training by educational and satisfaction **questionnaires** addressed to trainees, customers and funders, hot and cold.
- The creation of a **Training Commission**. The mission of this Commission is to validate the development strategy of the Training Pole, to validate the catalogue you have in hand and to reference trainers on the basis of their technical and pedagogical skills.

- The creation of **5 paths** upgrading competencies for multiple functions of the sector.
- The reinforcement of an offer around courses planned in **intra-company**, fully personalized in a **very flexible** way: practical/face-to-face/distance. Within these courses, it is possible to introduce a problem-solving dimension in the field through “**Actions**” training.
- The placement of trainees at the heart of the pedagogical objectives, targeting their ability to put them into **practice** after the training.

In this way, continuing vocational training is designed by Tecaliman to be in line with **company strategies** and to constitute investments with high **added value**.

It is up to you to tell us about your needs and the expected added value.

Fabrice Putier
Technical manager



SUMMARY

To each competence, its path	P5
Which path? For which compétences?	P6
Trainers bio	P7
Path «Integration in feed industry sector»	P10
Path «Process in feed plant »	P14
Path «Quality in feed plant»	P28
Path «Formulator & process» in feed sector	P36
Path «Transport in feed industry sector»	P38
Q&A	P40
Mapping Training and services	P41
Registration form	P42
Index	P44

● TO EACH COMPETENCE ITS PATH



More than a research center, a real technological interface. Tecaliman, a **key player in the sector** and interface between scientists, industrialists and the administration in support of trade unions, supports its members in the **control of their production processes**.

Tecaliman therefore offers **5 skill paths** for different objectives and profiles:

1. For newcomers to the sector, an **integration path** to the professions, operations and vocabularies.
2. For new operators in the factories, a **Process Path beginning** with initiations to operations with a focus granulation and for personnel in control, a **Process Path confirmed** training targeted on each unit operation or performance research.
3. For quality staff, a **Quality Path** focused on health and technical requirements.
4. For formulation staff or active ingredient manufacturers, a **Formulator & Process Path** linking processes and formulation requirements.
5. For future Qualimat **Transport** auditors, a **specific path** allowing the acquisition of this competence in partnership with Qualimat.

INTER-COMPANY

Tecaliman offers you to take part in **training courses listed in the 2024** training catalogue. These trainings are an opportunity to meet other professionals with different and enriching issues. Some have set dates and others are set up upon receipt of a minimum of registrants.

The inter-company training takes place in Tecaliman, in a room equipped with a video projector or in the **Pilot hall**.

Inter-company training can take place in **face-to-face** or in **distance learning**.

INTRA-COMPANY

Tecaliman offers you to **design and conduct a training according to your needs, within your company, within a maximum of 6 months**.

For questions of **confidentiality** or **practicality**, intra-company training allows you to **answer questions** you have, **directly on your own equipment**.

Intra-company training courses are:

- **catalogue training**, carried out on your site,
- **Tailor-made training**: the date, schedule, location, subject, and content are adapted to your needs.

These intra-company training courses can also take the form of “**action-training**”, that is, training aimed at solving a **specific problem within your company**.

For more information, contact us:

formation@tecaliman.com



**Qualiopi certified
for continuing
training**



WHICH PATH? FOR WHICH COMPETENCES?

PATH	TRAINING	
Integration Beginner	Integration to feed industry sector: Acquiring the fundamentals	Feed plant: Integrate its operation and its environment
	Behaviour of powders and grains: Anticipating their use in factories	Feed plant safety: Raise awareness of fire and explosion risks
Process Beginner to intermediate	Pellet mill: Optimising the driving of pellet mill	Feed plant: Acquire keys for performance and quality
	Feed plant safety: Raise awareness of fire and explosion risks	Energy saving: Optimize the conduct of operations
Process Intermediate to confirmed	Feed plant: Conduct and manage production operations	
	Grinding: Integrate design and driving for quality and performance	Pelleting: Master the line in its technical environment
	Compressed & forced air: The keys to mastering the performance of uses	Dosing/Weighing: Identify the keys to the mastery for a respect of formulas
	Energy Efficiency: Increase performance	Cooling: Identify the keys, from operation to control
	Liquids in the factory: Identify the keys to their uses	Analysis of manufacturing times: Acquire a methodology
Quality All levels	Homogeneity and mixing: Manage key factors	Carry-over: Manage key factors
	Pelleting: Manage pellets quality	Microbial Contamination: Control and prevention
	Powder and grain sampling: Managing key factors	Pest Prevention: The keys to control their population in factories
Formulator & Active manufacturer Beginner	Liquids in the factory: Identify the keys to their uses	From Formulation to Processes: Anticipate compliance with formulas in the factory
	Dosing/Weighing: Identify the keys to the mastery for a respect of formulas	Behaviour of powders and grains: Anticipating their use in factories
	Powder and grain sampling: Managing key factors	Homogeneity and mixing: Manage key factors
Transport All levels	Transport : Become a Qualimat transport auditor	



TRAINERS BIO



Fabrice PUTIER

34 years for the animal nutrition industry, its areas of expertise are **feed safety** and **carry-over** for over 29 years, with the **drafting of the measurement rules** referenced in **France** and the management of numerous industrial tests.



François LUCAS

Industrial performance specialist. 33 years of experience in animal nutrition manufacturing processes. It supports manufacturers in reducing **their energy consumption, optimizing their grinding systems and analysing operating times.**



Jérôme LAMOINE

Technologist Engineer – expert in grain processing industries. After more than 22 years in the **animal nutrition and petfood sector**, he now works as a consultant in France and abroad. He also teaches at **Polytech Sorbonne** to agri-food engineers.



Sandy ROUCHOUSE

16 years in support of the animal nutrition industry, on the pelleting and cooling drying processes. She has conducted numerous tests on industrial sites. **In particular, she contributed to a memo from the DGAL in application of the decree of 23/04/2007 on Salmonella approvals.**



Cecilia PASCALET

5 years supporting the animal nutrition industry on health aspects, conducting services, and incorporating liquids.

It assists **additive** manufacturers in the drafting of technical reports as part of their **approval.**

120

TRAINEES
In average per year

17.6 /20

NOTE OVERALL SATISFACTION
From trainees in 2022

1 000h

Of **TRAINING**
In average per year

100%

TRAINERS
are over 10 years old
experienced
in Feed industry

www.tecaliman.com



TRAINING CALENDAR 2024



As a reminder, some courses have pre-determined dates and the others are set up to acquire a quorum of trainees. Do not hesitate to the themes of the other courses, they can also interest you!

DATES 2024

Path «INTEGRATION in feed industry sector»

Integration to feed industry sector: Acquiring the fundamentals	14-15/03 ou 26-27/09
Feed plant: Integrate its operation and its environment	16 au 19/04
Behaviour of powders and grains: Anticipating their use in factories	Consult us
Feed plant safety: Raise awareness of fire and explosion risks	Consult us

Path «PROCESS in feed plant»

Pellet mill: Optimising the driving of pellet mill	21/03 ou 17/10
Feed plant: Acquire keys for performance and quality	Consult us
Feed plant safety: Raise awareness of fire and explosion risks	Consult us
Energy saving: Optimize the conduct of operations	Consult us
Feed plant: Conduct and manage production operations	7 au 11/10 et 4 au 8/11
Pelleting: Master the line in its technical environment	Consult us
Grinding: Integrate design and driving for quality and performance	Consult us
Dosing/Weighing: Identify the keys to the mastery for a respect of formulas	Consult us
Compressed & forced air: The keys to mastering the performance of uses	Consult us
Cooling: Identify the keys, from operation to control	Consult us
Energy Efficiency: Increase performance	Consult us
Analysis of manufacturing times: Acquire a methodology	Consult us
Liquids in the factory: Identify the keys to their uses	Consult us

Path «QUALITY in feed plant»

Homogeneity and mixing: Manage key factors	Consult us
Carry-over: Manage key factors	Consult us
Pelleting: Manage pellets quality	Consult us
Microbial Contamination: Control and prevention	Consult us
Powder and grain sampling: Managing key factors	Consult us
Pest Prevention: The keys to control their population in factories	Consult us

Path «FORMULATOR & ACTIVE MANUFACTURER»

Liquids in the factory: Identify the keys to their uses	Consult us
From Formulation to Processes: Anticipate compliance with formulas in the factory	Consult us
Dosing/Weighing: Identify the keys to the mastery for a respect of formulas	Consult us
Behaviour of powders and grains: Anticipating their use in factories	Consult us
Powder and grain sampling: Managing key factors	Consult us
Homogeneity and mixing: Manage key factors	Consult us

Path «TRANSPORT in feed industry sector»

Transport: Become a Qualimat transport auditor	Consult us
---	------------

PRESENTATION OF THE INTEGRATION PATH

If you are new to the sector, whatever your activity or that of your company in the animal nutrition sector, the trainings of this path primarily focused on technology have been designed for you with gradual levels of competences.

TRAINING OF THE PATH

Integration to feed industry sector:

Acquiring the fundamentals

2 mornings on line (7h)

the 14 & 15 march 2024 or the 26 & 27 september 2024



Feed plant:

Integrate its operation and its environment

4 days face-to-face (28h)

from Tuesday 16 to Friday 19 April 2024

New

Behaviour of powders and grains:

Anticipating their use in factories

A day face-to-face (7 h)

Dates to be defined according to requests

Feed plant safety:

Raise awareness of fire and explosion risks

One morning face-to-face (3.5 h)

Dates to be defined according to requests

+ INTEGRATION
+ DISCOVERY
+ SAFETY



All
levels

Integration to feed industry sector



Acquiring the fundamentals

ALL FUNCTIONS

Pedagogical objectives

- ▶ Indicate the constraints and the technical-economic links of the sector
- ▶ Recognize the specific vocabulary of the animal nutrition chain
- ▶ Identify the main manufacturing techniques used in feed industry



Program

- Presentation of the industrial sector
- Manufacturing diagrams
- Unit operations from receipt to delivery and their quality impact

INTER
OR
INTRA

Pedagogical approach and materials

- **Online training**
- Phases of presentation, questions and exchanges of experience between participants
- Quizzes and online games
- A Digital support is provided at the end of the training

Assessment and monitoring procedures

- Questionnaire on the trainee's expectations to be completed before training, then 3 months after to take stock of the evolution of practices
- Educational evaluation in the form of a MCQ at the end of the session

Audience

New employees, formulators, specialists in species, sales representatives in relation to animal nutrition plants, purchasing managers, support functions, formulators, manufacturers of additives or raw materials..

Requirements: None

Max. number of registrants: 10

If you are disabled, you can contact us for a study of your need.

formation@tecaliman.com

Dates: 14 and 15 March 2024 or 26 and 27 September 2024

Duration: 2 mornings Online (2 x 3.5h)

Trainer: Fabrice Putier (Trainer bio p.7)

Tariffs Inter / person: Members - 670.00 € HT (806.40 € TTC) ;

Non-members: 938 € HT (844.20 € TTC) ; Tariff Intra contact us

www.tecaliman.com

All
levels

Feed plant

Integrate its operation and its environment



ALL FUNCTIONS

Pedagogical objectives

- ▶ Integrate vocabulary and operation of manufacturing techniques
- ▶ Identify factors for controlling feed manufacturing techniques and constraints in production units

Program

- General (statistics, raw materials, manufacturing diagrams)
- Receiving, Handling
- Dosing, Grinding, Homogenization, Liquid Incorporation, Pelleting,
- Cooling, Crumbling, Sieving and Loading
- Impact of the plant on the environment, Energy
- Safety of plant operators
- Control of microbiological and additive risks

Pedagogical approach and materials

- **Face-to-face training**
- Presentation/Exchanges/In-room synthesis
- A hard copy is provided at the end of the training

Assessment and monitoring procedures

- Questionnaire on the trainee's expectations to be completed before training, then 3 months after to take stock of the evolution of practices
- Educational evaluation in the form of a MCQ at the end of the session

Audience

Persons in contact with the manufacturing units: beginner in the field, formulators, specialists in species, sales technicians, laboratory managers and technicians, quality managers, equipment manufacturers, suppliers of additives and raw materials, ...

Accessible to people with reduced mobility. If you are disabled, you can contact us for a study of your need.

Requirements: None

Max. number of registrants: 10

INTER
OR
INTRA

formation@tecaliman.com

Dates: from Tuesday 16 to Friday 19 April 2024

Duration: 4 days of 7h (28h) ; **Place:** Tecaliman, Nantes

Trainers: Fabrice Putier, Sandy Rouchouse, François Lucas (Trainers bio p.7)

Tariffs Inter / person: Members : 2100 € HT (2520€ TTC) ;
Non-members: 2940€ HT (3528€ TTC) ; Tariff Intra contact us

www.tecaliman.com

All
levels

Behaviour of powders and grains: Anticipating their use in factories



ALL FUNCTIONS

Pedagogical objectives

- ▶ Understand the behaviour of powders and grains
- ▶ Identify and test measurement methods and define their limits
- ▶ Anticipate the effects of these behaviours in the factory

Program

- Description of the behaviour of powders: Flow, mass gain, transmission of forces, de-mixing, etc. ...
- Characterization of these behaviors (Measurement)
- Identify the effects of these behaviours on powder use and handling

Pedagogical approach and materials

- **Face-to-face training**
- Realization of measurements in laboratory
- Presentation/Exchanges/Synthesis in room
- A hard copy is provided at the end of the training

Assessment and monitoring procedures

- Questionnaire on the trainee's expectations to be completed before training, then 3 months after to take stock of the evolution of practices
- Educational evaluation in the form of a MCQ at the end of the session

Audience

Persons in contact with the manufacturing units: beginner in the field, formulators, specialists in species, sales technicians, laboratory managers and technicians, quality managers, equipment manufacturers, suppliers of additives and raw materials, ...

Accessible to people with reduced mobility.
If you are disabled, you can contact us for a study of your need.

Requirements: None

Max. number of registrants: 10

formation@tecaliman.com

Dates: Date to be defined according to requests

Duration: 1 day of 7h ; **Place:** Tecaliman, Nantes

Trainers: Technology consultant

Tariffs Inter / person: Members - 670.00 € HT (806.40 € TTC) ;
Non-members: 938.00 € HT (1 125.60 € TTC); Tariff Intra contact us

www.tecaliman.com

All
levels

Feed plant safety

Raise awareness of fire and explosion risks



FACTORY STAFF

Pedagogical objectives

- ▶ Identifying the situation posing an accident risk due to an explosion in a dust atmosphere

Program

- Understanding the mechanisms of a dust explosion
- Know the risks of working in explosive atmospheres

Pedagogical approach and materials

- **Face-to-face training**
- In-room presentation and practical workshop phases
- A hard copy is provided at the end of the training

Assessment and monitoring procedures

- Educational evaluation in the form of a MCQ at the end of the session

Audience

Any person working in an animal nutrition plant

Requirements : None

Max. number of registrants: 15

Accessible to people with reduced mobility.
If you are disabled, you can contact us for a study of your need.

INTER
OR
INTRA

formation@tecaliman.com

Dates: Date to be defined according to requests

Duration: 1 demi-day of 3,5h ; **Place:** Tecaliman, Nantes

Trainers: Technology consultant

Tariffs Inter / person: Members - 344.00 € HT (412.80 € TTC) ;

Non-members: 481.60 € HT (577.92 € TTC) ; Tarifs Intra nous contacter

www.tecaliman.com



PRESENTATION OF THE PROCESS IN FEED PLANT PATH



Process path is at the **heart of Tecaliman's expertise**. Learning how to operate pellet mill, detailed acquisition of the operating principle and their quality impacts, immersion of several days in a pilot station: this path meets the essential needs of the operation of an animal nutrition plant.

TRAINING OF THE PATH

For operators

Pellet mill:

Optimising the driving of pellet mill

1 day of 7h

March 21, 2024 or October 17, 2024

New **Feed plant:** Acquire keys for performance and quality
10 days of 7h (70h on 4 sessions)
Dates to be defined according to requests

Sécurité en usine de Nutrition Animale :

Sensibiliser aux risques incendie et explosion

1 half-day Face-to-face (3.5h)

Description in path INEGRATION (p 14)

Energy saving:

Optimize the conduct of operations

2 mornings Online (2 x 3.5h)

Dates to be defined according to requests



Dosing/Weighing: Identify the keys to the mastery for a respect of formulas

2 mornings Online (2 x 3.5h)

Dates to be defined according to requests



Compressed & forced air: The keys to mastering the performance of uses

2 mornings Online (2 x 3.5h)

Dates to be defined according to requests



Cooling: Identify the keys, from operation to control

1 day of 7h

Dates to be defined according to requests

Energy Efficiency:

Increase performance

2 mornings Online (2 x 3.5h)

Dates to be defined according to requests



Analysis of manufacturing times:

Acquire a methodology

1 day of 7h

Dates to be defined according to requests

For supervisors

Feed plant

Conduct and manage production operations

9 days of 7h (63h)

October 7 to 11 and November 4 to 8, 2024

Pelleting:

Master the line in its technical environment

1 day of 7h

Dates to be defined according to requests

Grinding:

Integrate design and driving for quality and performance

2 days of 7h (14h)

Dates to be defined according to requests



Liquids in the factory:

Identify the keys to their uses

2 mornings Online (2 x 3.5h)

Dates to be defined according to requests



**+ FIELD
+ OPERATIONNAL
+ PRATICE**

www.tecaliman.com

Levels
Beginner to
intermediate

Pellet mill

Optimising the driving of pellet mill



OPERATORS

Pedagogical objectives

- ▶ Integrate the parameters for autonomous driving of a pellet press
- ▶ Explain the role of the pelle mill driver in product quality, equipment life and plant performance
- ▶ Manipulate the various parameters to optimize pelleting about enegy saving and quality

Program

- Manual pellet mill operation, adjustments
- Pelleting: definition, advantages and disadvantages
- The mechanisms of pelleting: forces involved
- The operation of a pellet mill: steering, optimisation
- The various parameters influencing pellet quality



Pedagogical approach and materials

- **Face-to-face training**
- Workshop observations and practices
- In-room presentation and synthesis phases
- Stages of exchange of experience between participants
- Personal commitment approach
- A hard copy is provided at the end of the training

Assessment and monitoring procedures

- Questionnaire on the trainee's expectations to be completed before training, then 3 months after to take stock of the evolution of practices
- Educational evaluation in the form of a MCQ at the end of the session

Audience

Production operators
Maintenance Operators

Requirements

Minimum 3 months experience as a
production or maintenance operator

Accessible to people with reduced mobility.
If you are disabled, you can contact us for a study
of your need.

Max. number of registrants: 10

formation@tecaliman.com

Dates: March 21, 2024 or October 17, 2024

Duration: 1 day of 7h (9h à 17h30); **Place:** Tecaliman, Nantes

Trainer: Jérôme Lamoine (Trainer bio p.7)

Tariffs Inter / person: Members - 670.00 € HT (806.40 € TTC) ;

Non-members: 938.00 € HT (1 125.60 € TTC); **Tariff Intra** contact us

www.tecaliman.com

Levels
Beginner to
intermediate

Feed plant

Acquire keys for performance and quality



OPERATOR

Pedagogical objectives

- ▶ Identify factors to control feed manufacturing techniques in relation to practices
- ▶ Identify existing constraints in production units and their sources
- ▶ Identify the factors affecting the final quality of feed and the means available for their control

Program

- Study of each unit operation with means of control and performance
- Sequence of operations and analysis of operating times
- Global Production Planning and Management
- Animal nutrition context
- On-site study of operations related to quality management
- Shrinkage
- Environment and machine safety
- Adherence to wording
- Operational management of feed safety
- Operational management of product quality



Pedagogical approach and materials

- **Face-to-face training**
- Observations and practices in workshop and/or factory
- In-room presentation and synthesis phases
- Individual and/or group exercises
- Exchange of experiences between participants
- A hard copy is provided at the end of the training

Assessment and monitoring procedures

- Questionnaire on the trainee's expectations to be completed before training, then 3 months after to take stock of the evolution of practices
- Educational evaluation in the form of a MCQ at the end of the session

Audience

Production operators
Maintenance Operators

Requirements

Minimum 3 months experience in the position

Accessible to people with reduced mobility.
If you are disabled, you can contact us for a study of your need.

Max. number of registrants: 10

formation@tecaliman.com

Date: Date to be defined according to requests

Duration: 10 days of 7 h (70 h) ; **Place:** Tecaliman, Nantes

Trainer: Jérôme Lamoine - Fabrice Putier (Trainers bio p.7)

Tariffs Inter / person: Members - 5910 € HT (7092 € TTC) ;

Non-members: 8274 € HT (9928.8 € TTC) ; **Tariff Intra** contact us

www.tecaliman.com

Levels
Intermediate
to confirmed

Energy saving

Optimize the conduct of operations



OPERATOR

Pedagogical objectives

- ▶ Describe the basic concepts of energy quantities
- ▶ Identify the energy impacts of conducting operations
- ▶ Include energy performance indicators in daily operations management

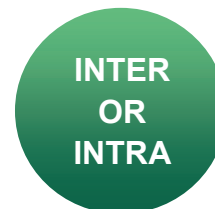


Program

- Energy Basics
- Definitions, understanding and exploitation of energy performance indicators
- Identification of the main energy consuming items in the plant
- Identification of factors influencing energy consumption in the daily conduct of production operations

Pedagogical approach and materials

- **Online training**
- Presentation/Exchanges/In-room synthesis
- Practical exercise with scenario
- A digital support is given at the end of the training



Assessment and monitoring procedures

- Questionnaire on the trainee's expectations to be completed before training, then 3 months after to take stock of the evolution of practices
- Educational evaluation in the form of a MCQ at the end of the session

Requirements

Animal nutrition factory process concepts and light driving experience

Max. number of registrants: 10

Audience

Production operators, maintenance workers

If you are disabled, you can contact us for a study of your need.

formation@tecaliman.com

Date: Date to be defined according to requests

Duration: 2 mornings (2 x 3.5h) Online

Trainer: François Lucas (Trainer bio p.7)

Tariffs Inter / person: Members - 670.00 € HT (806.40 € TTC) ;

Non-members: 938.00 € HT (1 125.60 € TTC) ; Tariff Intra contact us

www.tecaliman.com



Levels
Intermediate
to confirmed

Feed plant

Conduct and manage production operations

SUPERVISOR

Pedagogical objectives

- ▶ Implement key process technologies in animal nutrition
- ▶ Manipulate the main parameters of influence of these processes
- ▶ Identify the most common problems encountered and be able to implement appropriate solutions

Program

- Sizing of a plant
- General operation of a plant
- Handling, storage, receiving
- Main dosages and Peripheral dosages
- Grinding
- Mixing
- Conduct of pellet mill
- Factory visit
- Actions peripheral to production

Pedagogical approach and materials

- **Face-to-face training**
- The course covers the different processes used in the manufacture of feed. It is structured around practical workshop sessions, representing 50% of the training time, and theoretical sessions, exercises in the room, a factory visit.

Assessment and monitoring procedures

- Questionnaire on the trainee's expectations to be completed before training, then 3 months after to take stock of the evolution of practices
- Educational evaluation in the form of a MCQ at the end of the session

Audience

Industrial manager, Plant manager, production managers, team leader, process engineer

Accessible to people with reduced mobility.
If you are disabled, you can contact us for a study of your need.

Requirements

Minimum 6 months experience in a responsible position

Max. number of registrants: 12

formation@tecaliman.com

Dates: October 7 to 11 and November 4 to 8, 2024

Duration: 2 x 4.5 days of 7h (63h) over 2 weeks

Place: Stolz pilot station and Tecaliman

Trainers: Jérôme Lamoine, Fabrice Putier, Sandy Rouchouse (Trainers bio p.7)

Tarifs / personne : Members : 5320€ HT (6384€ TTC) ; Non-members: 7448€ HT (7661€ TTC)

www.tecaliman.com

Levels
Intermediate
to confirmed

Pelleting

Master the line in its technical environment



SUPPORT FUNCTION / SUPERVISOR

Pedagogical objectives

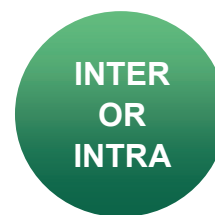
- ▶ Recall the basics of pelletization
- ▶ Integrate all the driving parameters of the pelleting and drying-cooling process
- ▶ Establish and manage quality indicators and performance indicators of pelleting
- ▶ Gain autonomy to solve the main problems of the pelleting process

Program

- Pelleting: definition, advantages and disadvantages
- Reminders on pelleting and drying equipment cooling and their control
- Pellet quality: measurement, monitoring and control (influencing factors)
- Energy performance of pelleting: measurement, monitoring and control (influencing factors)
- Issues related to pelleting : identification and group resolution

Pedagogical approach and materials

- **Face-to-face training**
- Observations and practices in the workshop
- In-room presentation and synthesis phases
- Exchange of experiences between participants
- A hard copy is provided at the end of the training



Assessment and monitoring procedures

- Questionnaire on the trainee's expectations to be completed before training, then 3 months after to take stock of the evolution of practices
- Educational evaluation in the form of a MCQ at the end of the session

Audience

Industrial manage, Plant manager, production managers, team leader, process engineer

Accessible to people with reduced mobility.
If you are disabled, you can contact us for a study of your need.

Requirements

Notions in animal nutrition, notions on raw materials used in animal nutrition
Prior completion of the training «Pellet mill Optimising the driving of pellet mill» or equivalent level of expertise

Max. number of registrants: 10

formation@tecaliman.com

Date: Date to be defined according to requests

Duration: 1 day of 7h ; **Place:** Tecaliman, Nantes

Trainer: Sandy Rouchouse (Trainer bio p.7)

Tariffs Inter / person: Members - 670.00 € HT (806.40 € TTC) ;

Non-members: 938.00 € HT (1 125.60 € TTC); Tariff Intra contact us

www.tecaliman.com

Levels
Intermediate
to confirmed

Grinding

Integrate design and driving for quality and performance



SUPPORT FUNCTION / SUPERVISOR

Pedagogical objectives

- ▶ Understand the operation and benefits of different types of grain grinders
- ▶ Assess the link between the grinding conditions and the grain sizes obtained
- ▶ Establishing a relationship between energy and particle size

Program

- Grinding in factory and diagrams
- Grinding theory
- Crushing quality: particle size distribution
- The equipment and its operation
- Operations and performance

Pedagogical approach and materials

- **Face-to-face training**
- Observations and practices in the workshop
- In-room presentation and synthesis phases
- Exchange of experiences between participants
- A hard copy is provided at the end of the training



Assessment and monitoring procedures

- Questionnaire on the trainee's expectations to be completed before training, then 3 months after to take stock of the evolution of practices
- Educational evaluation in the form of a MCQ at the end of the session

Audience

Industrial manager, team or production manager

Accessible to people with reduced mobility.
If you are disabled, you can contact us for a study of your need.

Requirements

Minimum 6 months of activity related to the operation of an animal nutrition plant

Max. number of registrants: 10

formation@tecaliman.com

Date: Date to be defined according to requests

Duration: 2 days of 7h (14h); **Place:** Tecaliman, Nantes

Trainer: Fabrice Putier (Trainer bio p.7)

Tariffs Inter / person: Members - 1290 € HT (1548 € TTC) ;

Non-members: 1806 € HT (2167.2 € TTC); **Tariff Intra** contact us

www.tecaliman.com

Levels
Intermediate
to confirmed

Dosing/Weighing

Identify the keys to the mastery for a respect of formulas



SUPPORT FUNCTION / SUPERVISOR

Pedagogical objectives

- ▶ Identify the design elements of a weighing station
- ▶ Implement the dosage on all items (Respect the formula, ...)
- ▶ Identify the strengths and weaknesses of a dosing system to improve its control (installation, suitability for needs, dosing procedure, etc.)



Program

- Formulator expectations in relation to dosage (tolerance per raw material, minimum incorporation, etc.)
- Sizing / being critical on a weighing installation and on the dosing installations in place
- Dosage management by the automation
- Factors Influencing Dosage Deviations

Pedagogical approach and materials

- **Online training**
- Observations and practices in the workshop
- In-room presentation and synthesis phases
- Exchange of experiences between participants
- A digital support is given at the end of the training



Assessment and monitoring procedures

- Questionnaire on the trainee's expectations to be completed before training, then 3 months after to take stock of the evolution of practices
- Educational evaluation in the form of a MCQ at the end of the session

Audience

Industrial manager, team or production manager, Formulator, Manufacturers of additives or raw materials

Requirements

Minimum knowledge of animal nutrition plant diagrams

Max. number of registrants: 10

If you are disabled, you can contact us for a study of your need.

formation@tecaliman.com

Date: Date to be defined according to requests

Duration: 2 mornings of 3.5 h (7h)

Trainer: Sandy Rouchouse (Trainer bio p.7)

Tariffs Inter / person: Members - 670.00 € HT (806.40 € TTC) ;

Non-members: 938.00 € HT (1 125.60 € TTC) ; Tariff Intra contact us

www.tecaliman.com

Levels
Intermediate
to confirmed

Compressed & forced air

The keys to mastering the performance of uses



SUPPORT FUNCTION / SUPERVISOR

Pedagogical objectives

- ▶ Size and optimize a compressed air production and processing facility based on the air requirements of a feed plant
- ▶ Identify the positions of use
- ▶ Develop an approach to optimize uses

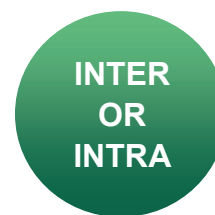


Program

- Energy context of compressed air station
- Reminder on the theory of compressed air
- Different air production and treatment technologies
- Distribution network
- Air consuming stations in a factory
- Characterize the energy performance of a facility
- Design and optimize a production and processing facility

Pedagogical approach and materials

- **Online training**
- Observations and practices in the workshop
- In-room presentation and synthesis phases
- Exchange of experiences between participants
- A digital support is given at the end of the training



Assessment and monitoring procedures

- Questionnaire on the trainee's expectations to be completed before training, then 3 months after to take stock of the evolution of practices
- Educational evaluation in the form of a MCQ at the end of the session

Audience

Industrial manager, team or production manager

Requirements

Minimum knowledge of animal nutrition plant diagrams

If you are disabled, you can contact us for a study of your need.

Max. number of registrants: 10

formation@tecaliman.com

Date: Date to be defined according to requests

Duration: 2 mornings of 3.5 h (7h) Online

Trainer: François Lucas (Trainer bio p.7)

Tariffs Inter / person: Members - 670.00 € HT (806.40 € TTC) ;

Non-members: 938.00 € HT (1 125.60 € TTC) ; Tariff Intra contact us

www.tecaliman.com

Levels
Intermediate
to confirmed

Cooling

Identify the keys, from operation to control



SUPPORT FUNCTION / SUPERVISOR

Pedagogical objectives

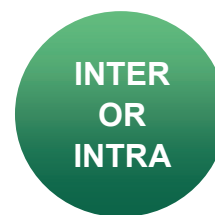
- ▶ Identify the mode of operation of coolers
- ▶ Integrate coolers performance criteria
- ▶ Identify key levers to optimize the cooling operation
- ▶ Ability to identify coolers strengths/weaknesses

Program

- Relationship of coolers with other operations
- Cooling/coolers in the die
- Drying/Cooling – Aeraulic Base
- Performance check
- Driving parameters
- Implementation of a diagnostic tool

Pedagogical approach and materials

- **Face-to-face training**
- Observations and practices in the workshop
- In-room presentation and synthesis phases
- Exchange of experiences between participants
- A hard copy is provided at the end of the training



Assessment and monitoring procedures

- Questionnaire on the trainee's expectations to be completed before training, then 3 months after to take stock of the evolution of practices
- Educational evaluation in the form of a MCQ at the end of the session

Audience

Industrial Manager, Team or Production Manager, Maintenance

Accessible to people with reduced mobility. If you are disabled, you can contact us for a study of your need.

Requirements

Process Concepts for Feed Mills

Max. number of registrants: 10

formation@tecaliman.com

Date: Date to be defined according to requests

Duration: 1 day of 7h ; **Place:** Tecaliman, Nantes

Trainer: Sandy Rouchouse (Trainer bio p.7)

Tariffs Inter / person: Members - 670.00 € HT (806.40 € TTC) ;

Non-members: 938.00 € HT (1 125.60 € TTC) ; Tariff Intra contact us

www.tecaliman.com

Levels
Intermediate
to confirmed

Energy efficiency

Increase performance



SUPPORT FUNCTION / SUPERVISOR

Pedagogical objectives

- ▶ Identify energy market parameters
- ▶ Identify relevant energy parameters in plant design
- ▶ Measuring the energy impacts of conducting operations
- ▶ Define an energy measurement plan with reliable indicators
- ▶ Define a portfolio of actions to control energy efficiency



Program

- Presentation of the UAB energy context (Energy market, Significant energy uses, etc.)
- Measurement Plan (Definition and Development)
- Good practices for including energy savings in plant sizing
- Good practices for conducting operations by controlling energy impacts
- Development of an action plan to increase the energy performance of its tool

Pedagogical approach and materials

- **Online training**
- Presentation and Exchanges
- Practical exercises with a scenario
- A digital support is given at the end of the training

INTER
OR
INTRA

Assessment and monitoring procedures

- Questionnaire on the trainee's expectations to be completed before training, then 3 months after to take stock of the evolution of practices
- Educational evaluation in the form of a MCQ at the end of the session

Requirements

Process Concepts for Feed Mills

Max. number of registrants: 10

Audience

Industrial and factory manager, production manager, energy manager, investment manager.

If you are disabled, you can contact us for a study of your need.

formation@tecaliman.com

Date: Date to be defined according to requests

Duration: 2 mornings of 3.5 h (7h) Online

Trainer: François Lucas (Trainer bio p.7)

Tariffs Inter / person: Members - 670.00 € HT (806.40 € TTC) ;

Non-members: 938.00 € HT (1 125.60 € TTC) ; Tariff Intra contact us

www.tecaliman.com

All
Levels

Analysis of manufacturing times

Acquire a methodology



OPERATOR / SUPERVISOR

Pedagogical objectives

- ▶ Identify the steps involved in designing a time analysis project
- ▶ Mastering the techniques of constructing and analyzing a time diagram

Program

- Presentation of a time analysis methodology
- Definition of industrial performance indicators for use in animal nutrition
- Construction and analysis of a time diagram
- Practical exercises of exploiting a time diagram: measurement of productivity indicators, search for the limiting factor

Pedagogical approach and materials

- **On-site training**
- Presentation/Exchanges/In-room synthesis
- Practical exercise with scenario
- A hard copy is provided at the end of the training

INTER
OR
INTRA

Assessment and monitoring procedures

- Questionnaire on the trainee's expectations to be completed before training, then 3 months after to take stock of the evolution of practices
- Educational evaluation in the form of a MCQ at the end of the session

Audience

Operators, Plant Manager, Manufacturing manager, Maintenance Manager, Quality Manager, Investment Manager, Leader, Continuous Improvement

Requirements :

Process Concepts for Feed Mills

Max. number of registrants: 10

Accessible to people with reduced mobility.
If you are disabled, you can contact us for a study of your need.

formation@tecaliman.com

Date: Date to be defined according to requests

Duration: 1 day of 7h ; **Place:** Tecaliman, Nantes

Trainer: François Lucas (Trainer bio p.7)

Tariffs Inter / person: Members - 670.00 € HT (806.40 € TTC) ;

Non-members: 938.00 € HT (1 125.60 € TTC) ; Tariff Intra contact us

www.tecaliman.com

Levels
Intermediate
to confirmed

Liquids in the factory

Identify the keys to their uses



SUPPORT FUNCTION / SUPERVISOR

Pedagogical objectives

- ▶ Progress in mastering the incorporation of liquids into feed
- ▶ Identify constraints related to the use of liquids
- ▶ Define the key elements of a liquid intake installation project

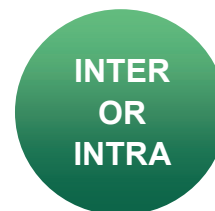


Program

- Liquids in animal nutrition: Why? At which factory step?
- Property of liquids and characterization
- Elements of the specifications of an installation
- Manage and criticize an installation by load or continuously
- Control the quality of liquid intake
- The safety of property and people related to the use of liquids

Pedagogical approach and materials

- **Online training**
- Presentation and Exchanges
- Practical exercises with a scenario
- A digital support is given at the end of the training



Assessment and monitoring procedures

- Questionnaire on the trainee's expectations to be completed before training, then 3 months after to take stock of the evolution of practices
- Educational evaluation in the form of a MCQ at the end of the session

Audience

Industrial manager, team or production manager, Formulator, Manufacturers of additives or raw materials

Requirements

Process Concepts for Feed Mills

Max. number of registrants: 10

If you are disabled, you can contact us for a study of your need.

formation@tecaliman.com

Date: Date to be defined according to requests

Duration: 1 day of 7h ;

Trainer: Cecilia Pascalet (Trainer bio p.7)

Tariffs Inter / person: Members - 670.00 € HT (806.40 € TTC) ;

Non-members: 938.00 € HT (1 125.60 € TTC) ; Tariff Intra contact us

www.tecaliman.com

PRESENTATION OF THE QUALITY IN FEED PLANT PATH

The Quality path is part of an **increasingly demanding regulatory and sanitary context** and proposes to approach the **quality of finished products** from different angles: control of technical quality, nutritional quality and **sanitary quality**. For more practicality and flexibility, this course is mainly offered **online**.

TRAINING OF THE PATH

Carry-over

Manage key factors

3 half-days of 3.5h soit 10,5h

Date to be defined according to requests



Homogeneity and mixing

Manage key factors

3 half-days of 3.5h soit 10,5h

Date to be defined according to requests



Pelleting

Manage pellets quality

1 day of 7h

Date to be defined according to requests

Microbial Contamination

Control and prevention

2 half-days of 3.5h soit 7h

Date to be defined according to requests



Powder and grain sampling

Managing key factors

1 demi-day of 3.5h

Date to be defined according to requests



Pest Prevention

The keys to control their population in factories

1 day of 7h

Date to be defined according to requests

New

New

QUALITÉ EN USINE DE NUTRITION ANIMALE



www.tecaliman.com

Levels
Intermediate
to confirmed

Homogeneity and mixing

Manage key factors



OPERATOR / SUPPORT FUNCTION / SUPERVISOR

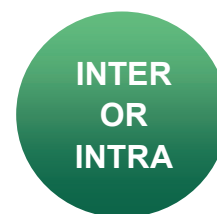
Pedagogical objectives

- ▶ Describe the basic mechanisms of mixer operation
- ▶ Identify the methods for validating the proper functioning of a mixer
- ▶ Identify phenomena influencing the distribution of particles or a product in feed in order to evaluate this dispersion and its stability in the plant



Program

- Description of mixers
- Physics of powder mixing
- Good practices for assessing homogeneity
- Mixing control
- Understanding demixing and its evaluation
- Exercise for interpreting homogeneity assessment results
- Product factors and processes influencing dispersion



Pedagogical approach and materials

- **Online training**
- Phases of presentation, questions and exchanges of experience between participants
- Quizzes and online games
- A Digital support is provided at the end of the training

Assessment and monitoring procedures

- Questionnaire on the trainee's expectations to be completed before training, then 3 months after to take stock of the evolution of practices
- Educational evaluation in the form of a MCQ at the end of the session

Audience

Quality Operators, Manager/Technician quality, Plant manager, Manufacturing Manager, Production Manager

Requirements

Knowledge of factory quality requirements
Reading Datasheet Tecaliman iTec H1

Max. number of registrants: 10

If you are disabled, you can contact us for a study of your need.

formation@tecaliman.com

Dates : Date to be defined according to requests

Duration: 3 half-days of 3.5h (so 10,5h)

Trainer: Fabrice Putier (Trainer bio p.7)

Tariffs Inter / person: Members - 998 € HT (1197.6 € TTC) ;

Non-members: 1398 € HT (1677.6 € TTC) ; Tariff Intra contact us

www.tecaliman.com

Levels
Intermediate
to confirmed

Carry-over

Manage key factors



OPERATOR / SUPPORT FUNCTION / SUPERVISOR

Pedagogical objectives

- ▶ Set up and implement measures to evaluate carry-over.
- ▶ Analyze field test results
- ▶ Determine the factors resulting from products and processes leading to the existence of carry-over
- ▶ Classify the relative impacts of carry-over control parameters



Program

- Definition of carry-over, Legal requirements and future developments, interest of carry-over management beyond requirements
- Evaluation rules and their essential points: factory, truck
- Interpretation of carry-over in relation to professional performance
- Influence of the method on the results
- Conventional carry-over control elements
- Control the effect of products, processes and practice



Pedagogical approach and materials

- **Online training**
- Phases of presentation, questions and exchanges of experience between participants
- Quizzes and online games
- A Digital support is provided at the end of the training

Assessment and monitoring procedures

- Questionnaire on the trainee's expectations to be completed before training, then 3 months after to take stock of the evolution of practices
- Educational evaluation in the form of a MCQ at the end of the session

Audience

Quality Operators, Manager/Technician quality, Plant manager, Manufacturing Manager, Production Manager

Requirements

Knowledge of factory quality requirements
Reading Datasheet Tecaliman iTec T2

Max. number of registrants: 10

If you are disabled, you can contact us for a study of your need.

formation@tecaliman.com

Dates : Date to be defined according to requests

Duration: 3 half-days of 3.5h (soit 10,5h)

Trainer: Fabrice Putier (Trainer bio p.7)

Tariffs Inter / person: Members - 998 € HT (1197.6 € TTC) ;

Non-members: 1398 € HT (1677.6 € TTC) ; Tariff Intra contact us

www.tecaliman.com

Levels
Intermediate
to confirmed

Pelleting

Manage pellets quality

SUPPORT FUNCTION

Pedagogical objectives

- ▶ Describe the basic mechanisms of the granulation process and the adjustment of a pellet mill
- ▶ Identify and manipulate factors influencing pellet quality
- ▶ Manipulate the methods of physical characterization of granules

Program

- Operation and operation of a pellet mill
- Physical quality criteria of pellets: equipment, measurement and methods
- Factors influencing these quality criteria

Pedagogical approach and materials

- **On-site training**
- Workshop observations and practices
- Presentation/Exchanges/In-room synthesis
- A hard copy is provided at the end of the training

Assessment and monitoring procedures

- Questionnaire on the trainee's expectations to be completed before training, then 3 months after to take stock of the evolution of practices
- Educational evaluation in the form of a MCQ at the end of the session

Audience

Quality manager/technician, factory manager, manufacturing manager, production manager, sales engineer, maintenance manager, species engineer, nutritionist, formulator

Requirements

Concept of feed nutrition and feed processes

Max. number of registrants: 10

Accessible to people with reduced mobility.
If you are disabled, you can contact us for a study of your need.

INTER
OR
INTRA

formation@tecaliman.com

Date: Date to be defined according to requests

Duration: 1 day of 7h ; **Place:** Tecaliman, Nantes

Trainer: Sandy Rouchouse (Trainer bio p.7)

Tariffs Inter / person: Members - 670.00 € HT (806.40 € TTC) ;

Non-members: 938.00 € HT (1 125.60 € TTC) ; Tariff Intra contact us

www.tecaliman.com

Levels
Intermediate
to confirmed

Microbial Contamination

Control and prevention



OPERATOR / SUPPORT FUNCTION / SUPERVISOR

Pedagogical objectives

- ▶ Identify microbial risks
- ▶ Establish an approach to study the health status of the production site to improve its control of contamination
- ▶ Identify treatment control factors for decontamination purposes



Program

- The problem of microbial contamination in animal nutrition
- Origin and location of microbial contamination at industrial sites in the sector
- Feed processing and control of microbial contamination at a site

Pedagogical approach and materials

- **Online training**
- Phases of presentation, questions and exchanges of experience between participants
- Quizzes and online games
- A digital support is provided at the end of the training

Assessment and monitoring procedures

- Questionnaire on the trainee's expectations to be completed before training, then 3 months after to take stock of the evolution of practices
- Educational evaluation in the form of a MCQ at the end of the session

Audience

Manager/Technician
quality, maintenance manager or operator,
plant manager,
manufacturing manager, production
manager, nutritionist, formulator

Requirements

Concept in feed processes

Max. number of registrants: 10

If you are disabled, you can contact us for a study of your need.

INTER
OR
INTRA

formation@tecaliman.com

Date: Date to be defined according to requests

Duration: 2 half-days of 3.5h (7h)

Trainer: Fabrice Putier (Trainer bio p.7)

Tariffs Inter / person: Members - 670.00 € HT (806.40 € TTC) ;

Non-members: 938.00 € HT (1 125.60 € TTC) ; Tariff Intra contact us

www.tecaliman.com

Levels
Intermediate
to confirmed

Powder and grain sampling

Managing key factors



OPERATOR / SUPPORT FUNCTION / SUPERVISOR

Pedagogical objectives

- ▶ Acquire knowledge in powder sampling and current regulations
- ▶ Know the representativeness of your samples, on what they can and cannot prove
- ▶ Ability to adapt sampling to control objectives



Program

- Purpose of sampling
- Sampling theory
- Sampling assumptions and strategy
- The sampling equipment
- Storage and preparation of samples for analysis

Pedagogical approach and materials

- **Online training**
- Phases of presentation, questions and exchanges of experience between participants
- Quizzes and online games
- A digital support is provided at the end of the training

Assessment and monitoring procedures

- Questionnaire on the trainee's expectations to be completed before training, then 3 months after to take stock of the evolution of practices
- Educational evaluation in the form of a MCQ at the end of the session

Audience

Manager/Technician
quality, manufacturing manager, formulator,
manufacturers of additives or raw materials

Requirements

Concept in feed processes

Max. number of registrants: 10

If you are disabled, you can contact us for a study of your need.

INTER
OR
INTRA

formation@tecaliman.com

Date: Date to be defined according to requests

Duration: 1 morning of 3,5h online

Trainer: Fabrice Putier (Trainer bio p.7)

Tariffs Inter / person: Members - 344.00 € HT (412.80 € TTC) ;

Non-members: 481.60 € HT (577.92 € TTC) ; Tariff Intra contact us

www.tecaliman.com

Levels
Intermediate
to confirmed

Pest prevention

The keys to control their population in factories



OPERATOR / SUPPORT FUNCTION / SUPERVISOR

Pedagogical objectives

- ▶ Learn more about pests in animal nutrition plants
- ▶ Identify opportunities for control or prevention and their effectiveness

Program

- Control of rodent populations
 - Offending and problematic species
 - Determinants of their biology and behaviour
 - Master plan
- Control of bird populations
 - Offending Species – Status of Species
 - Determinants of their biology and behaviour
 - Master plan
- Control of insect populations of stored feeds
 - Diversity of insect species implicated
 - Determinants of the biology and behaviour of some species
 - Modalities and Master's Plan

Pedagogical approach and materials

- **On-site training**
- Presentation/Exchanges/In-room synthesis
- A hard copy is provided at the end of the training

Assessment and monitoring procedures

- Questionnaire on the trainee's expectations to be completed before training, then 3 months after to take stock of the evolution of practices
- Educational evaluation in the form of a MCQ at the end of the session

Audience

Manager/Technician
quality, factory manager,
manufacturing manager, production manager

Requirements

Concept in feed processes

Max. number of registrants: 10

If you are disabled, you can contact us for a study of your need.

INTER
OR
INTRA

formation@tecaliman.com

Date: Date to be defined according to requests

Duration: 1 day of 7h ; **Place:** Tecaliman, Nantes

Trainer: Consultant expert

Tariffs Inter / person: Members - 670.00 € HT (806.40 € TTC) ;

Non-members: 938.00 € HT (1 125.60 € TTC) ; Tariff Intra contact us

www.tecaliman.com

PRESENTATION OF THE FORMULATOR & ACTIVE MANUFACTURER PATH

This path is part of an **objective of transmission** to formulators and active ingredient manufacturers (Additives and veterinary drugs) the **constraints of feed production** so that all the profession can move together towards the best possible control of the quality of production. This course is mostly **new and delivered online**.

TRAINING OF THE PATH



Liquids in the factory:

Identify the keys to their uses
2 mornings 3.5 h online 3.5 h (7h)
Dates to be defined according to requests
Description in PROCESS path (p 27)



From Formulation to Processes:

Anticipate compliance with formulas in the factory
2 mornings 3.5 h online 3.5 h (7h)
Dates to be defined according to requests



Dosing/Weighing: Identify the keys to the

mastery for a respect of formulas
2 mornings 3.5 h online 3.5 h (7h)
Dates to be defined according to requests
Description in PROCESS path (p 22)



Behaviour of powders and grains:

Anticipating their use in factories
One days Face-to-face training (7 h)
Dates to be defined according to requests
Description in INTEGRATION path (p 12)



Powder and grain sampling:

Managing key factors
1 demi-day of 3.5h
Date to be defined according to requests
Description in QUALITY path (p 34)



Homogeneity and mixing:

Manage key factors
3 half-days of 3.5h (10,5h)
Date to be defined according to requests
Description in QUALITY path (p 30)



From Formulation to Processes:

Anticipate compliance with formulas in the factory

FORMULATOR & ACTIVE MANUFACTURER

Pedagogical objectives

- ▶ Identify the operations impacting compliance with the formula
- ▶ Integrate the impact of the elements of conduct of these operations on the formula
- ▶ Integrate other parameters also impacting the respect of the formula

Program

- Animal Nutrition Plant Process Reminder
- Definition of compliance with the formula
- Identification of operations directly impacting compliance with the formula
- Research of the other parameters of management of the installations impacting this respect

Pedagogical approach and materials

- **On-site training**
- Group exercises
- Presentation/Exchanges/Synthesis in room
- A hard copy is provided at the end of the train

Assessment and monitoring procedures

- Questionnaire on the trainee's expectations to be completed before training, then 3 months after to take stock of the evolution of practices
- Educational evaluation in the form of a MCQ at the end of the session

Audience

Formulators, Active Ingredient
Manufacturers, Quality Managers

Requirements

Concept in feed processes

Max. number of registrants: 10

Accessible to people with reduced mobility.
If you are disabled, you can contact us for a
study of your need.

INTER
OR
INTRA

formation@tecaliman.com

Date: Date to be defined according to requests

Duration: 1 day of 7h ; **Place:** Tecaliman, Nantes

Trainer: Fabrice Putier (Trainer bio p.7)

Tariffs Inter / person: Members - 670.00 € HT (806.40 € TTC) ;

Non-members: 938.00 € HT (1 125.60 € TTC) ; **Tariff Intra** contact us

www.tecaliman.com

PRESENTATION OF THE
**TRANSPORT IN FEED
INDUSTRY PATH**

TRAINING OF THE PATH

Become a Qualimat transport auditor

3 days (21h)

Date to be defined according to requests

This path will be enriched over the years
in partnership with QUALIMAT



Levels
Intermediate
to confirmed

TECALIMAN-QUALIMAT PARTNERSHIP

Transports

Becoming a Qualimat Transport Auditor



AUDITOR

Pedagogical objectives

- ▶ Master the requirements of the Qualimat Transport specifications,
- ▶ Identify and formulate deviations from these requirements in the context of audit missions to committed transport operators,
- ▶ Master the rules stemming from the third-party recognition regulation and the Qualimat OC collaboration agreement applicable by the auditors (calculation of audit duration, identification of cases with enhanced due diligence, etc.)

Program

- Presentation of Qualimat Transport reference documents, with focus
 - on the requirements resulting from the Qualimat Transport Specifications,
 - the specificities of the third-party recognition regulation of the Qualimat-OC collaboration agreement applicable by the auditors.
- Scenarios around written and oral exercises based on real cases,
- Some reminders on HACCP fundamentals and auditing techniques

Audience

Auditors of certifying bodies (OC) signatories to the collaboration agreement Qualimat-certifying bodies

Accessible to people with reduced mobility.
If you are disabled, you can contact us for a study of your need.

Requirements

Agri-food knowledge and skills in animal sectors

Min/ max. number of registrants: 7/12

For more information, please contact us:

formation@tecaliman.com

secretariat@qualimat.org

Dates : Date to be defined according to requests

Duration: 3 days (21 h) ; **Place:** Nantes or Paris

Trainer: Qualimat Project Manager and IoD'Conseil

Tariffs : 2100 € H.T / person

www.tecaliman.com

HOW DO I COMPOSE TRAINING CUSTOM-MADE?

All the courses presented in this catalogue can be used as a basis for **tailor-made training** within your company. You can also ask us for **other topics** not covered here. The process is simple: **we first discuss your need**, your problems and your objectives, then we offer you an pedagogical program and a training synopsis that you validate. In less than **6 months** we can work with you with a **program tailor-made**.

HOW ARE TRAINING SUPPORTED?

The training provided by Tecaliman may be financed **wholly or in part by your OPCO**. In order to know the amount of this support, you can send to **your OPCO** the page corresponding to the training in question.

WHAT IS THE ADMINISTRATIVE PROCESSING OF A REGISTRATION?

1. The trainee or his company sends a **registration form** (cf. page 42 of the catalogue) which he sends by e-mail to formation@tecaliman.com or by post. **There is no registration deadline link to the training.**
2. Tecaliman sends a **registration confirmation** by email
3. Tecaliman publishes a **training agreement** sent to the company. By signing the agreement, the company undertakes to present the trainee or trainees. If the company requests support from its OPCO, it sends it the agreement accompanied by the training Program.
4. On receipt of the signed agreement, Tecaliman sends back a **confirmation of registration** for the trainee which is valid for convocation as well as a **preparatory questionnaire** to be completed (It is requested to submit it as soon as possible and at the latest at the beginning of the training)
5. At the end of the training, Tecaliman sends an **invoice** to the company or the OPCO together with the application form and a **certificate** attesting to the follow-up of the training for the trainee(s) concerned.

MORE QUESTIONS? CONTACT US!



Fabrice Putier
 Technical manager
 02 72 74 90 91
f.putier@tecaliman.com

Let's talk about:

- Your future training project
- A technical question or pedagogical



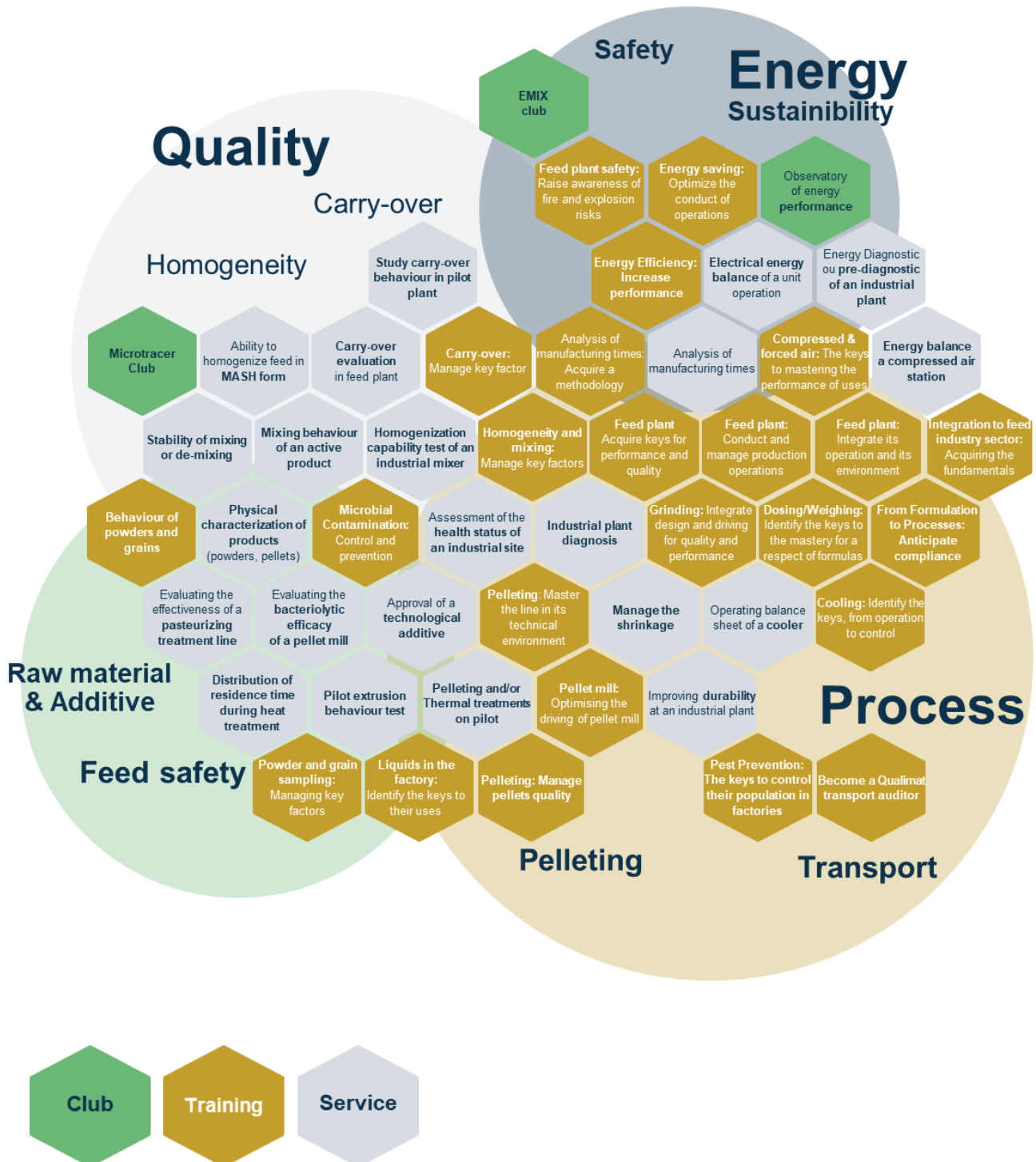
Marie Jouan
 Administrative assistant
 02 72 74 90 91
formation@tecaliman.com

Let's talk about:

- An administrative need
- Training follow-up

RELATION TRAINING AND SERVICES

All training courses presented in this catalogue can be aligned with Tecaliman services described in another catalogue. This coherence is presented here as a mapping.





REGISTRATION form Inter-Compagny training 2024

To be completed and returned to TECALIMAN
Formation@tecaliman.com • 02 72 74 90 91



TRAINING *If you are disabled, you can contact us for a study of your need*

- Integration to feed industry sector: Acquiring the fundamentals - 14/15 march or 26/27 september
- Feed plant: Integrate its operation and its environment - 16 to 19 april
- Behaviour of powders and grains: Anticipating their use in factories
- Feed plant safety: Raise awareness of fire and explosion risks
- Pellet mill: Optimising the driving of pellet mill – 21 march or 17 october
- Feed plant: Acquire keys for performance and quality
- Energy saving: Optimize the conduct of operations
- Feed plant: Conduct and manage production operations – 7 to 11 october + 4 to 8 november
- Pelleting: Master the line in its technical environment
- Grinding: Integrate design and driving for quality and performance
- Dosing/Weighing: Identify the keys to the mastery for a respect of formulas
- Compressed & forced air: The keys to mastering the performance of uses
- Cooling: Identify the keys, from operation to control
- Energy Efficiency: Increase performance
- Analysis of manufacturing times: Acquire a methodology
- Liquids in the factory: Identify the keys to their uses
- Homogeneity and mixing: Manage key factors
- Carry-over: Manage key factors
- Pelleting: Manage pellets quality
- Microbial Contamination: Control and prevention
- Powder and grain sampling: Managing key factors
- Pest Prevention: The keys to control their population in factories
- From Formulation to Processes: Anticipate compliance with formulas in the factory
- Transport: Become a Qualimat transport auditor

For training without indicated dates, the latter are fixed on receipt of an optimum number of registrations

Name - Surname	E-mail	Function

The company certifies that registered trainees comply with the Training Requirements

COMPAGNY

Must be completed

NAME : _____ **SME :** YES NO

Adress : _____

KEY POINT OF CONTACT FOR SETTING UP TRAINING

Who will receive the registration confirmation

NAME / Surname: _____ **N° Phone** _____

E-mail : _____

Payment by transfer or cheque (payable to Tecaliman) upon receipt of the invoice.

A 30% deposit can be requested upon registration. A paid invoice will be sent after completion of the training.

Compagny Stamp

Date, Name and signature

Return your registration form to: formation@tecaliman.com

**Or by mail to Tecaliman—Technocampus Alimentation—2, impasse T. Bertrand-Fontaine
44323 Nantes Cedex 3**



BE A MEMBER, IS TO BENEFIT FROM ...

MORE THAN 40 YEARS OF KNOW-HOW

Tecaliman is available to each member to provide **independent advice to assess industrial processes** and their control.

Tecaliman develops **specific, individualized and confidential services** based on the needs expressed by its members.

Tecaliman members benefit from a preferential rate on each service order and can use **the Research Tax Credit in France (-30% on research missions)**.

The number of places per training module is limited, **Tecaliman reserves the priority of registrations to its members.**

**Join the pole
research
and the technical network
of the processing sector
grains!**

www.tecaliman.com

More informations
Order a service
Request advice



INDEX OF TRAINING



Integration to feed industry sector: Acquiring the fundamentals	p 10
Feed plant: Integrate its operation and its environment	P 11
Behaviour of powders and grains: Anticipating their use in factories	p 12
Feed plant safety: Raise awareness of fire and explosion risks	p 13
Pellet mill: Optimising the driving of pellet mill	p 15
Feed plant: Acquire keys for performance and quality	p 16
Energy saving: Optimize the conduct of operations	p 17
Feed plant: Conduct and manage production operations	p 19
Pelleting: Master the line in its technical environment	p 20
Grinding: Integrate design and driving for quality and performance	p 21
Dosing/Weighing: Identify the keys to the mastery for a respect of formulas	p 22
Compressed & forced air: The keys to mastering the performance of uses	p 23
Cooling: Identify the keys, from operation to control	p 24
Energy Efficiency: Increase performance	p 25
Analysis of manufacturing times: Acquire a methodology	p 26
Liquids in the factory: Identify the keys to their uses	p 27
Homogeneity and mixing: Manage key factors	p 30
Carry-over: Manage key factors	p 31
Pelleting: Manage pellets quality	p 32
Pelleting: Manage pellets quality	p 33
Powder and grain sampling: Managing key factors	p 34
Pest Prevention: The keys to control their population in factories	p 35
From Formulation to Processes: Anticipate compliance with formulas in the factory	p 37
Transport : Become a Qualimat transport auditor	p 39



TRAIN IT'S

- **OPTIMIZE THE MANAGEMENT OF PRODUCTION TOOLS**
- **MASTERING THE ENVIRONMENT AND KNOW-HOW IN FEED PLANTS**
- **ACQUIRE BEST PRACTICES**
- **ACCULTURE TO THE ANIMAL NUTRITION SECTOR**
- **UPDATE YOUR KNOWLEDGE**
- **EXCHANGE AND BUILD A NETWORK**

Tecaliman

Technocampus Alimentation
2, impasse T. Bertrand-Fontaine
44323 Nantes Cedex 3



Follow us

www.tecaliman.com

formation@tecaliman.com • 02 72 74 90 91